
TOP ONE TECH LIMITED
23" LCD Open Frame Touch Monitor
(The Dust-proof,PCAP,LED backlight)

Model: TOT230UCA001

Part number:TOT230K1C001



Top One Tech's 23" open frame LCD touch monitor have a long-lasting product cycle because the enclosure is controlled by Top One Tech's specifications. Future panel improvements are therefore possible without external changes. The TOT230UCA001 integrate with the Top One Tech's PCAP technology touchscreen.

Features

- Bezel seal standard: NEMA3 and IEC IP65
- Long lasting product cycle-enclosure controlled by Top One Tech specifications
- Future generation panels phased-in without external changes
- High quality panel with high brightness,high contrast ratio and broad viewing angle
- Multiple mounting options including VESA mount, horizontal or vertical bracket-mount
- Compact and slim profile for easy integration from side,top and bottom
- Top One Tech's PCAP technology on pure glass for the ultimate in image quality
- Finger or gloved hand operation
- Dual VGA/DVI input video format
- Worldwide agency approvals

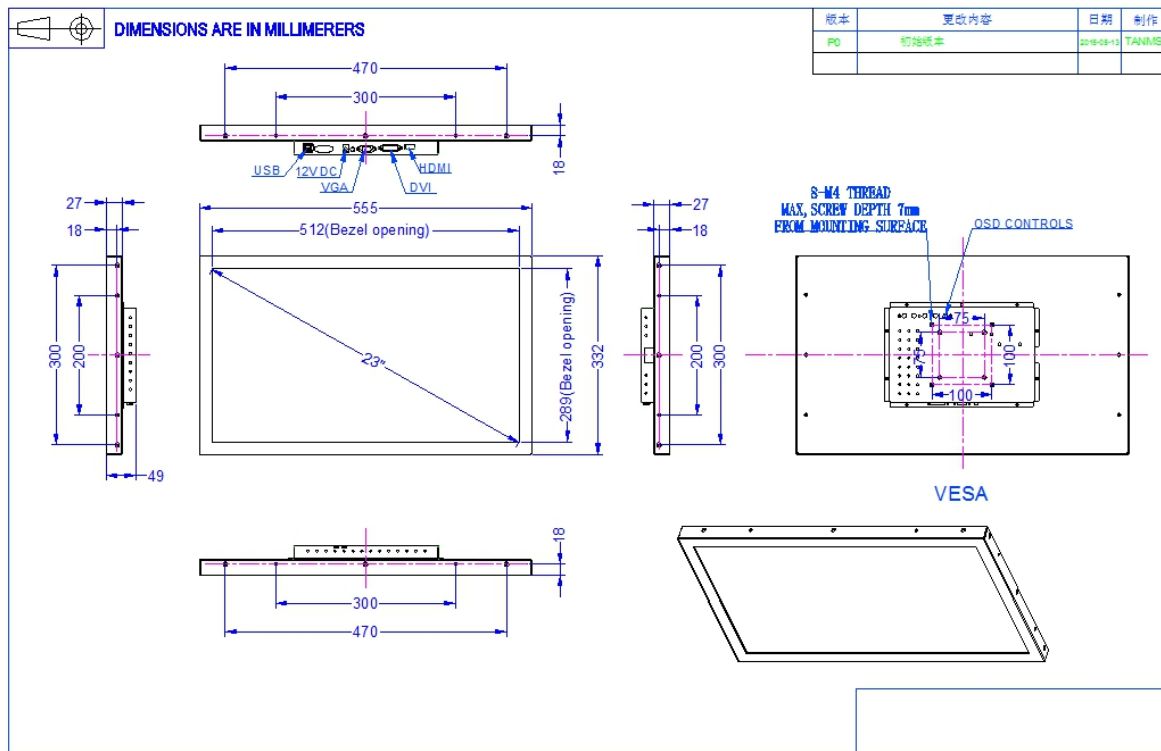
Specification

Model No.	TOT230UCA001	
Series	OT, Dust-proof	
Display Type	16:9 Ratio 23 " a-Si TFT-LCD,LED backlight	
Active Area(display)	20.05"(509.18mm)x11.28"(286.42mm)	
Bezel opening	20.16"(512mm)×11.38"(289mm)	
Monitor Dimensions	Width: 555mm Height: 332mm Depth: 49mm	
Suggested Resolution	1920×1080 @ 60Hz	
Support Colors	16.7M	
Brightness(Typ.)	Pure LCD Panel	250cd/m2
	With PCAP Glass Sensor	217cd/m2
Response Time(Typ.)	14ms	
Viewing Angle (Typ.at CR>10)	Horizontal(left/right)	89°/89°
	Vertical(up/down)	89°/89°
Contrast Ratio(Typ.)	1000:1	
Video Input	VGA ,DVI,HDMI	
Frequency (H/V)	74.25~98MHz / 60~75Hz	
Power Supply	Type: External brick Input (line) voltage: 100-240 VAC, 50-60 Hz	
Environment	Operating Temp:	0~50°C
	Storage Temp:	-20~60°C

	Operating RH:	20%~90%
	Storage RH:	5%~90%
MTBF	30,000 Hours	
LCD Back light Life(Typ.)	30,000 Hours	
Weight (Approx.)	N.W :7.7Kg; G.W : 20.8Kg (2pcs in one package);	
Power Consumption	19W /0.55W (Standby)	
Mount Interface	1)VESA 75mm and 100mm 2)Mount bracket, horizontal or vertical (Standard mount brackets are supplied)	
OSD Control	Buttons	AUTO,+,POWER,-,MENU
	Function	Brightness, Contrast Ratio, Auto-adjust, Phase, Clock, H/V Location, Languages, Function, Reset
Touch screen Type	Top One Tech 23" Projected Capacitive touch sensor, 1 points for win7, 5.3mm thickness	
Touch System Interface	Having USB interface	
Touch Response time	USB: <10ms	
Packing MEAS	650*195*435mm(2pcs in one package)	
Agency Approval	CCC, ETL, FCC, CE, RoHS	

NOTE:The display SPEC. will change follow the relevant LCD panel brand and model

Mechanical Dimensions



Accessories

Power Cable: A North American power cable or an European power cable is included according to the end user's area.

Power Supply Brick: A power supply brick is included.

Touch/Video/DVI Cables: Detachable serial or USB touch cable, video cable and DVI cable are included (Optional by different model)

L-brackets: Four standard L-brackets are included. (Optional by different model)

Typical Application

Gaming/Casino Systems
Outdoor and indoor Kiosks
Entertainment
Transport and Ticketing
Hospitality
Banking
Customized Solutions

How to contact us

TOP ONE TECH LIMITED

Mobile Phone : (+86)13631610695

Tel: 0086-0755-21070641

Whatsapp/Wechat : +8613631610695

Email : sales@toponetech.cn

Skype : elsieyu-sz@hotmail.com

Office in China : Room 1517, Taiyangneng Guigu Building Zhongxing Xiaoqu, Yunfeng Road No.3
Gaofeng shequ, Longhua District, Shenzhen, China

Facilities in China : No. 2, Guihua Jiayi Industrial district, Guanlan, Longhua, Shenzhen, China 518110